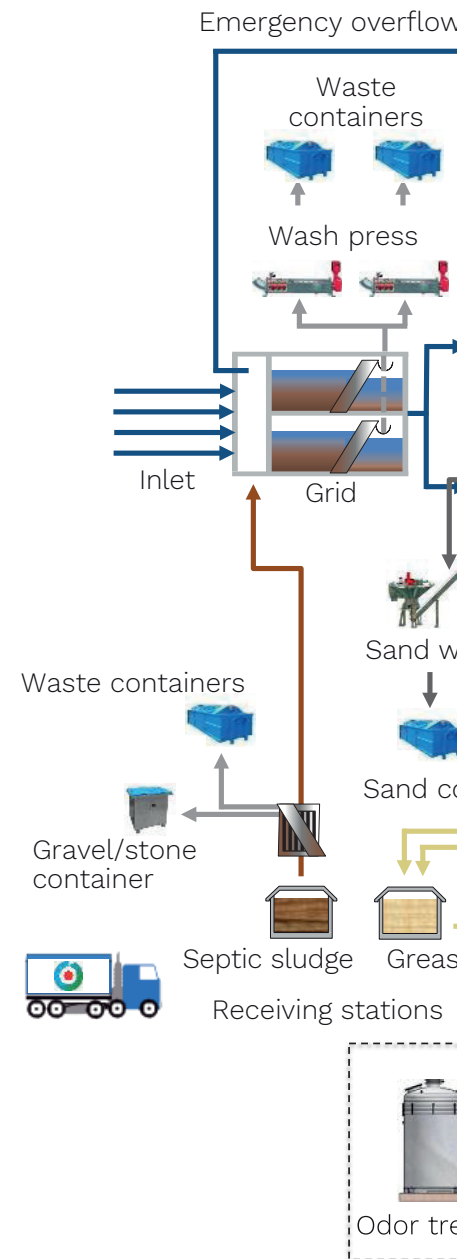
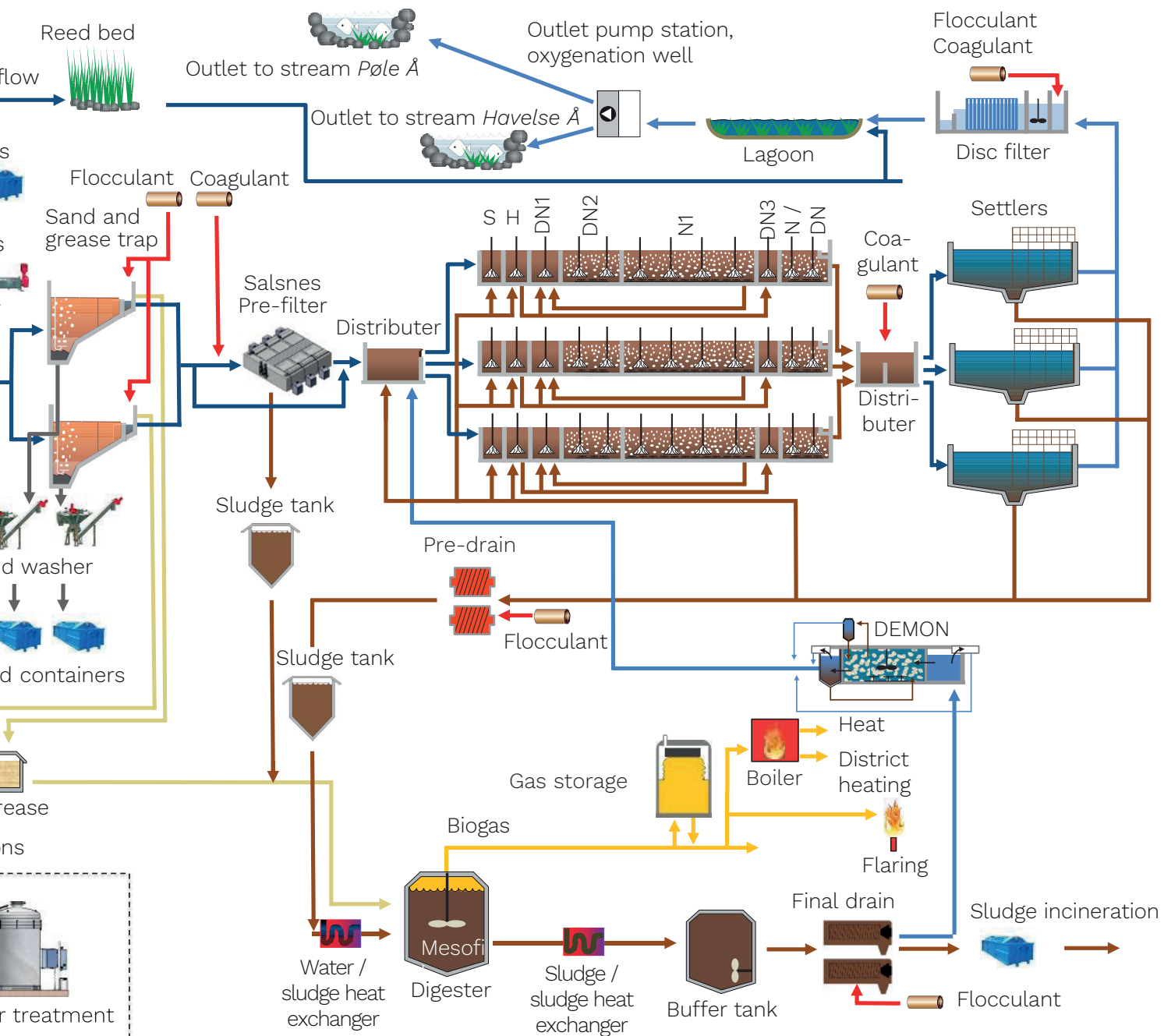


A photograph of industrial wastewater treatment equipment. In the foreground, a large, vertical, cylindrical tank is filled with a brown, turbid liquid. The tank is connected to a network of stainless steel pipes and valves. A prominent feature is a large, curved pipe that arches over the top of the tank. To the right, a red-handled valve is visible, connected to a horizontal pipe. The background shows a complex industrial setting with various pipes, tanks, and structural elements, all under bright, overhead lighting. The overall scene is clean and well-maintained.

**FACT SHEET AND
FLOWCHART FOR
WWTP HCR SYD**

Plant data	Number	Volumen (Total)
Grit/grease trap	2	496 m ³
Tank for coagulant	1	20 m ³
Tank for coagulant (pre-precipitation)	1	5 m ³
Final dewatering (Screw press)	2	320 Kg TS/h per unit
Hydrolysis tank (Bio-P)	3	155 m ³
DN1 tank	3	1490 m ³
DN2 tank (swing zone)	3	3067 m ³
N tank	3	6895 m ³
DN3 tank	3	1334 m ³
Clarifier tanks	3	10250 m ³
Return sludge pumps	6	500 m ³ /h per pump
Hydrolysis pumps	6	150 m ³ /h per pump
Waste sludge pumps	6	22 m ³ /h per pump
Turbo compressor	3	2200-5400N m ³ /h per blower
Anaerobic digester	1	2515 m ³
Gas storage	1	500 m ³
Recirculation system	1	4000 m ³ /h
Process ventilation system (process lines)	3	5000 m ³ /h per ventilator
Process ventilationsystem (multifunction)	1	1000 m ³ /h
Odor treatment system	2	2500 m ³ /h
Final filtration disc filters	2	300 l/s per filter
Pump for chemicals to process	4	0-50 l/h
Pump for chemicals to prefiltration	1	0-25 l/h
blower for sand trap	2	25-125 m ³ /h
Centerflow belt screen	2	1620 m ³ /h per unit
Effluent pump	3	1250 m ³ /h





Environmental parameters

Parameter	Load 2021	Effluent 2021	Discharge limit
Total nitrogen (TN) [mg/l]	41	1,96	3,66
Total phosphorus (TP) [mg/l]	7,5	0,11	0,182
Suspended solids (SS) [mg/l]	315	2,62	5
COD [mg/l]	478	22,31	75
BOD [mg/l]	159	1,52	3



Hillerød Forsyning

Solrødgårds Alle 6
3400 Hillerød
kundeservice@hfors.dk
hfors.dk

hfors.dk/wwtp-hcr-syd